

Maiden Way, Ingleby Barwick



£219,995

**IH** INGLEBY HOMES





This very attractive, large style, three bedroom detached home is situated within the favoured 'Rings' development of Ingleby Barwick, whilst boasting a large rear garden with a southerly, probate rear outlook!

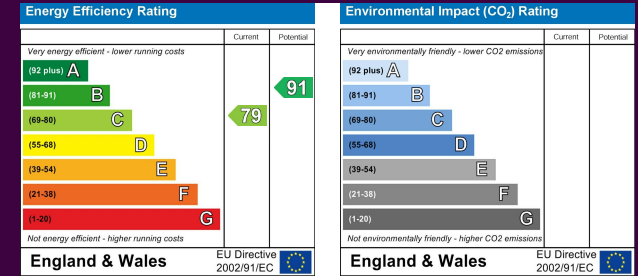
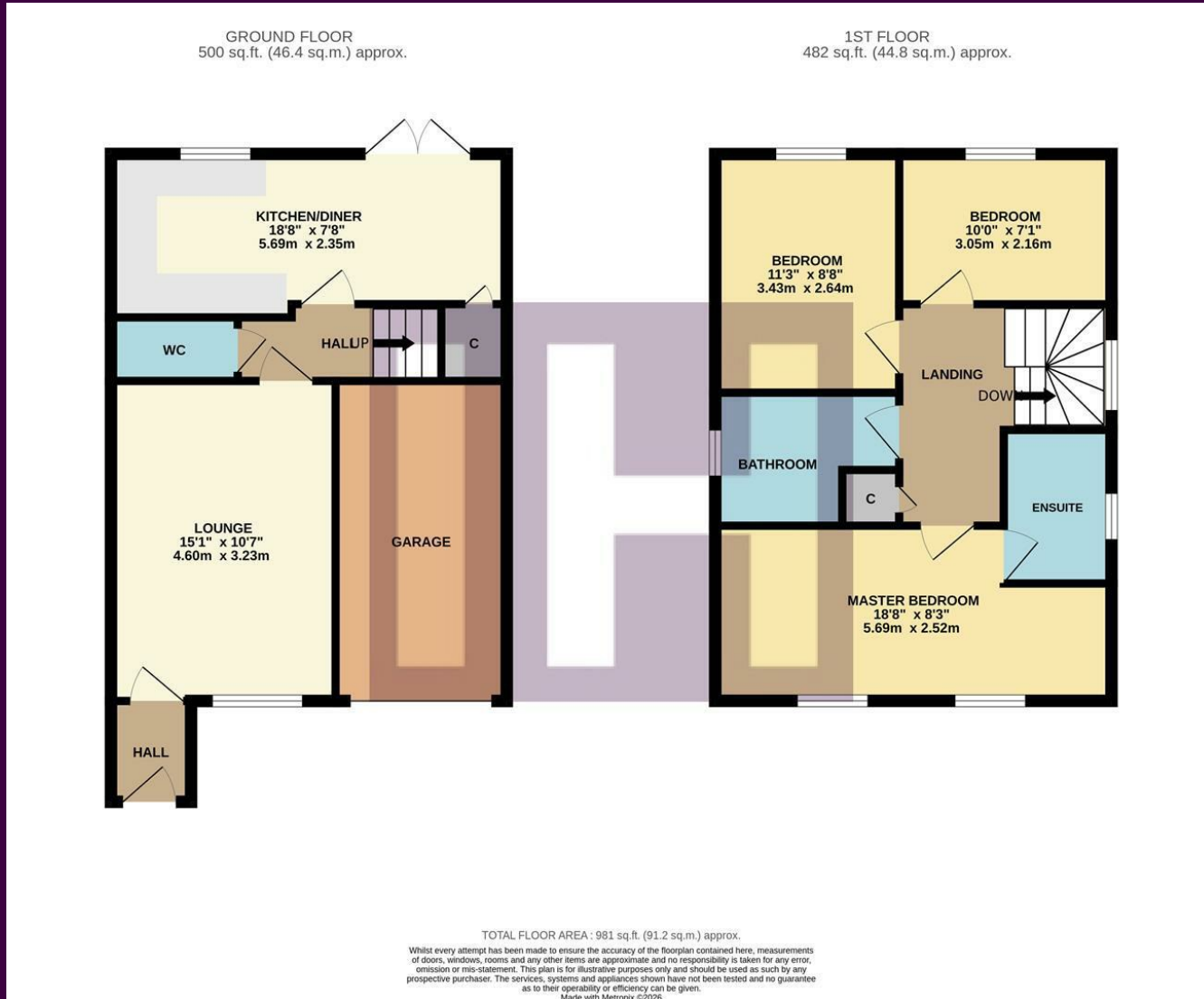
Stylish and modern, the spacious ground floor accommodation very briefly comprises an entrance hall, generous lounge with wall-mounted tv feature and panelling, inner hall with stairs to the first floor, cloakroom/WC, and impressive open-plan kitchen/diner with 'French' doors to the rear garden and patio.



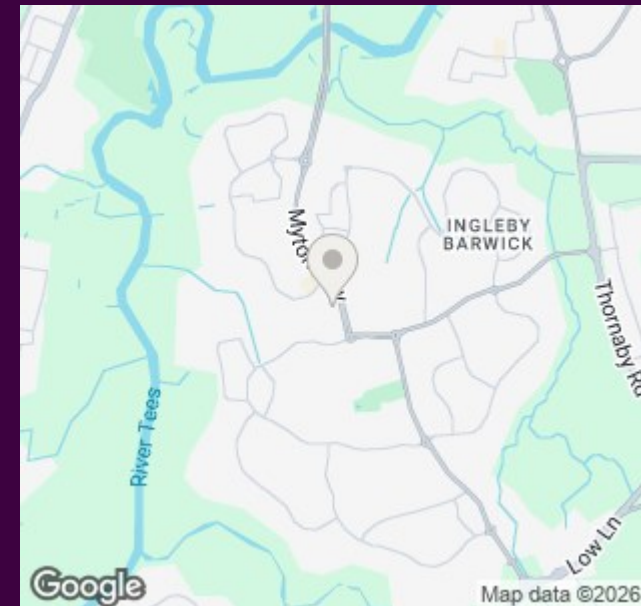
The first floor brings three great bedrooms, the especially generous 'Master' with modern ensuite, complimented by the separate family bathroom.

A double width front drive approaches the integral garage, with 'up and over' door, passing the front garden which is laid to lawn. The fence enclosed rear garden is particular feature, surprisingly large, with near end patio and generous lawn, all enjoying a sunny, southerly and private rear outlook.

# The Layout



# The Location



Council Tax Band:

D

Tenure:

Freehold



- An impressive, larger style three bedroom detached property
- Favoured 'Rings' location, excellent nearby amenities and schooling
- Modern and attractive throughout - 'turn-key' ready
- Large rear garden enjoying a southerly, private outlook
- Spacious lounge and separate open-plan kitchen/diner
- Three great bedrooms, 'Master' with ensuite
- No forward chain, early viewing advised



[www.ingleby-homes.co.uk](http://www.ingleby-homes.co.uk)  
01642 671025

**IH** INGLEBY HOMES